



WATER RESOURCES INTEGRATION PROGRAM, PHASE 1 PIPELINE SEGMENT 2A

Solicitation No. B-14-045-DD

SAWS Job No. 14-8605

ADDENDUM No. 2

SEPTEMBER 8, 2014

To Respondent of Record:


This addendum, applicable to work referenced above, is an amendment to the proposal and plans and specifications and as such will be a part of and included in the Contract Documents. Acknowledge receipt of this addendum by entering the Addendum number and issue date on the space provided in submitted copies of the proposal.

MODIFICATIONS TO THE SPECIFICATIONS

- 1. CONTRACT DOCUMENTS, TECHNICAL SPECIFICATIONS INDEX, Page TS-1, Delete the entry for Specification "01700 PROJECT CLOSEOUT" beginning on page "01700 – 1".

MODIFICATIONS TO THE PLANS

- 1. Sheet GN02: Modify the last line of the second INDEX OF DRAWINGS table to read as follows:
"TR03-10 TREE PROTECTION AND PRESERVATION PLAN SET".
- 2. CP and TR Sheets: Add the attached plan sheets after sheet DT12 in accordance with the index on sheet GNO2 of the plans. Sheets being added are cathodic protection design related sheets designated CP1 through CP5 and Tree Protection and Preservation plan sheets designated TR1 though TR10.


 Terry L. Conn, P.E.
 Civil Engineering Consultants



ACKNOWLEDGEMENT BY RESPONDENT

Each Respondent is requested to acknowledge receipt of this Addendum No. X on the Price Proposal and by his/her signature affixed hereto and to file same as an attachment to his/her proposal.

This undersigned acknowledges receipt of this Addendum No. 1 and the proposal submitted herewith is in accordance with the information and stipulations set forth.

Date

Signature of Respondent

END OF ADDENDUM

Station	Type	Notes
10+00	IJTS	
16+50	MTS	
27+55	CTS	
36+00	MTS	
44+50	MTS	
53+10	IJTS	6" AIR VALVE
58+00	MTS	
70+25	MTS	
77+26	IJTS	6" AIR VALVE
84+25	MTS	
91+25	MTS	
98+66	CTS	
104+60	IJTS	6" AIR VALVE
109+90	CTS	
119+20	MTS	
128+50	MTS	
137+50	IJTS	6" AIR VALVE
147+07	CTS	
147+88	IJTS	12" DRAIN
156+00	IJTS	6" AIR VALVE
162+42	FPTS	NATURAL GAS
169+94	CTS	
177+05	CTS	
179+25	CTS	
179+32	IJTS	24" WATER
180+36	CTS	
188+20	IJTS	6" AIR VALVE
195+10	CTS	
198+62	CTS	
206+52	CTS	
210+70	IJTS	6" AIR VALVE
211+61	CTS	

Station	Type	Notes
220+96	FPTS	OIL FLOW LINE
221+00	FPTS	SALT WATER LINE
228+00	MTS	
235+12	FPTS	NATURAL GAS
242+35	FPTS	SALT WATER LINE
244+00	IJTS	10" AIR VALVE
244+64	FPTS	NATURAL GAS
251+82	FPTS	SALT WATER LINE
258+84	CTS	
261+36	FPTS	NATURAL GAS
268+50	MTS	
275+25	MTS	
282+00	IJTS	12" DRAIN
282+10	CTS	
284+90	CTS	
287+94	IJTS	8" AIR VALVE
288+00	CTS	
296+75	MTS	
305+50	MTS	
314+30	IJTS	4" AIR VALVE
322+75	MTS	
331+35	IJTS	12" DRAIN
336+72	CTS	
343+58	IJTS	6" AIR VALVE
345+92	FPTS	OIL FLOW LINE
348+24	FPTS	OIL FLOW LINE
353+23	FPTS	OIL FLOW LINE
359+69	FPTS	OIL FLOW LINE
361+32	FPTS	OIL FLOW LINE
366+71	FPTS	OIL FLOW LINE
369+50	IJTS	

RECTIFIER SCHEDULE OF CATHODIC PROTECTION

PIPE MATERIAL	RECTIFIER NUM.	STATION	SIZE		ANODES		ANODE WELL DEPTH (FEET)	STRUCTURE	DETAIL
			VOLTS	AMPS	NUM.	TYPE			
STEEL DIELECTRIC	1	180+00	24	18	6	TA3	160	60-INCH WATERLINE	2/CP2


GENERAL NOTES:

1. THE LOCATIONS FOR RECTIFIERS, ANODES AND TEST STATIONS INDICATED ON THE PLANS ARE APPROXIMATE. THE CONTRACTOR SHALL FIELD LOCATE AND MARK THE FINAL LOCATIONS WITH OWNER'S REPRESENTATIVE. FINAL LOCATIONS SHALL AVOID AREAS SUBJECT TO FLOODING OR DRAINAGE.
2. THE CONTRACTOR SHALL PROTECT EXISTING TEST STATIONS AND EXISTING ANODE WIRES. DAMAGE TO EXISTING WIRES, ANODES, TEST STATIONS OR STRUCTURES SHALL BE REPLACED BY THE CONTRACTOR. UNAPPROVED CABLE SPLICES ARE NOT ALLOWED.
3. CONTRACTOR SHALL VERIFY POWER AVAILABILITY TO EACH RECTIFIER WITHIN 30 DAYS OF NOTICE TO PROCEED.
4. SEE DETAIL 1 SHEET CP2 FOR DEPTH OF DEEP ANODE WELL.

ABBREVIATIONS:


- IJTS INSULATING JOINT TEST STATION, SEE DETAIL 1, SHEET CP4
 CTS CASING TEST STATION, SEE DETAIL 5, SHEET CP3
 MTS MONITORING TEST STATION, SEE DETAIL 3, SHEET CP3
 FPTS FOREIGN PIPE TEST STATION, SEE DETAIL 4, SHEET CP4

App.	
Revisions	
Date	7/24/2014
No.	




V&A Consulting Engineers, Inc.
 Texas Registered Engineering Firm
 F-9154

Date:	JULY 2014
Designed By:	AC
Drawn By:	AC
Checked By:	GG
SCALE:	

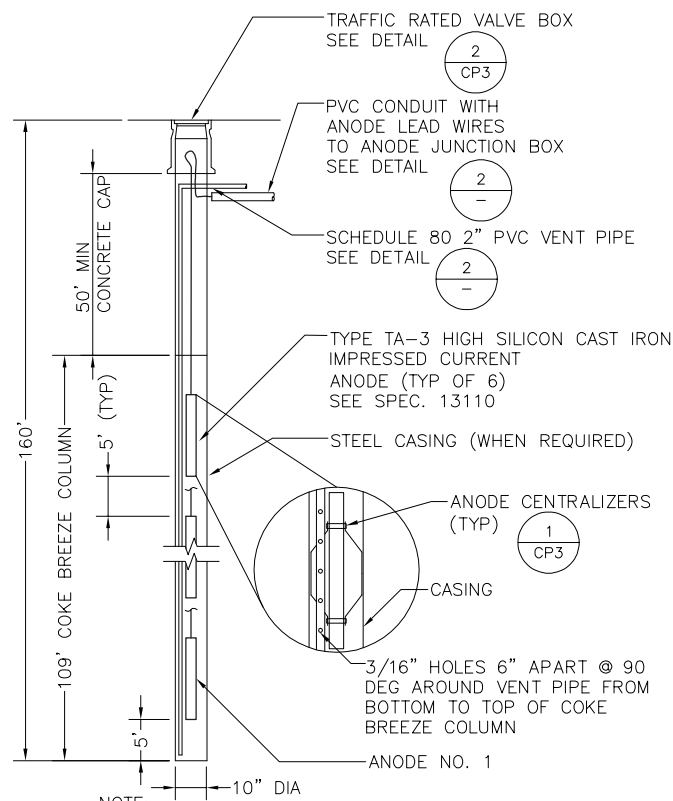


8220 Jones Road, Suite 500
 Houston, TX 77065
 Tel: (713) 568-9067, Fax: (713) 568-9068
 Firm No. F-9154

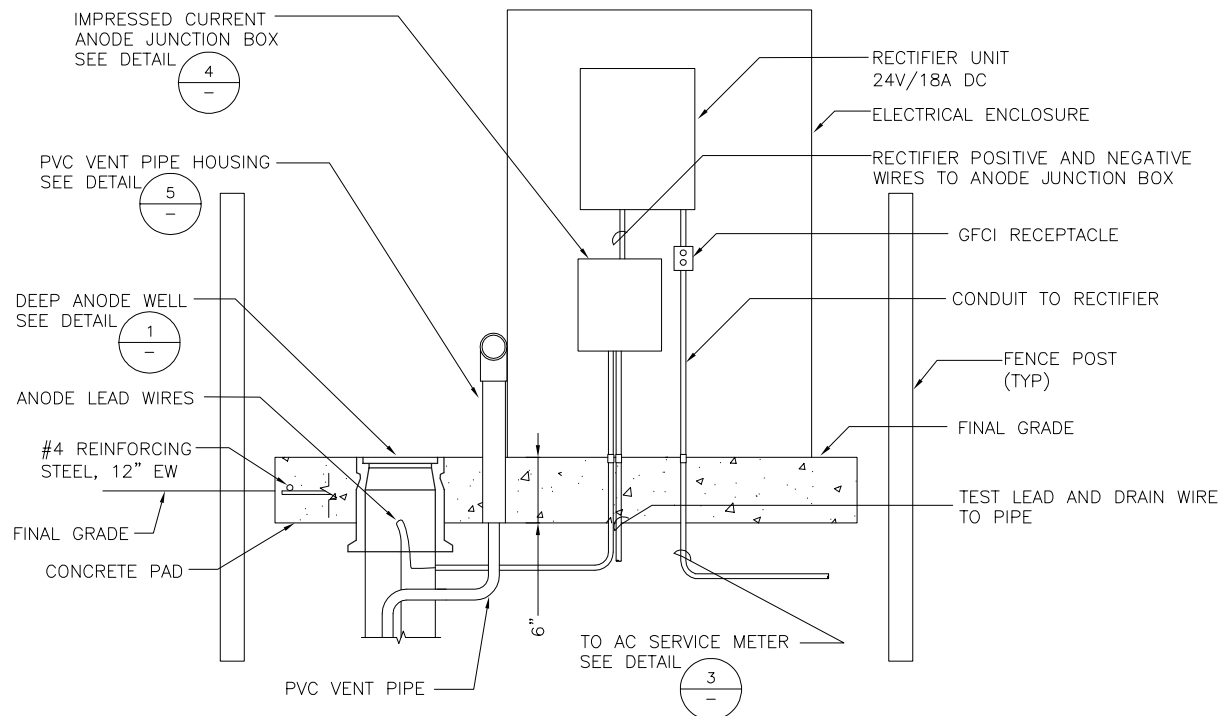


SAN ANTONIO
 WATER SYSTEM

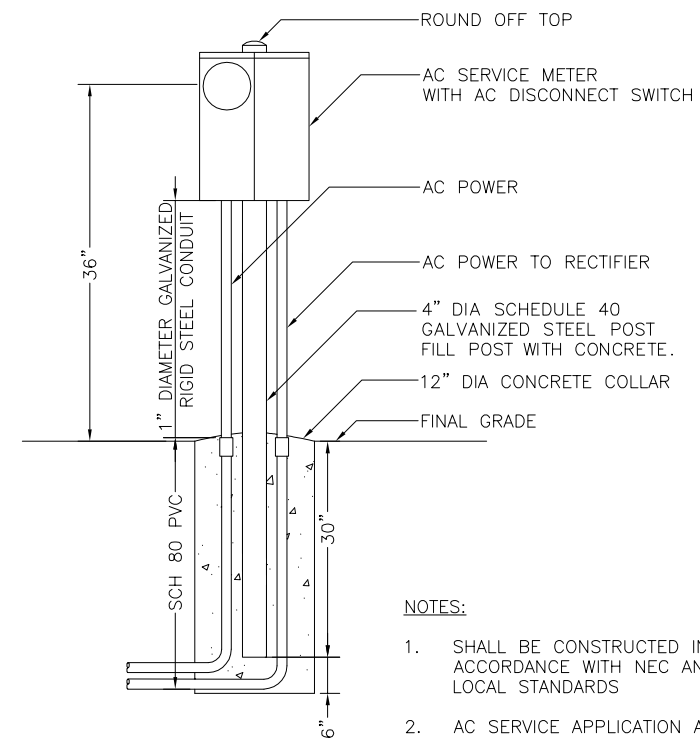
SAWS JOB NO. 14-8605 (WATER)
 WRIP - PROJECT 1, SEGMENT 2A
 CATHODIC PROTECTION
 TEST STATION SCHEDULE



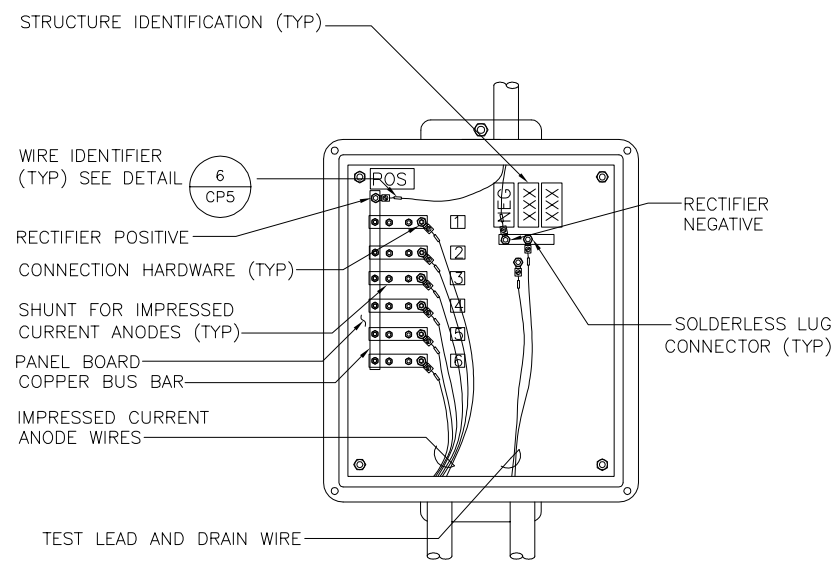
DEEP ANODE WELL DETAIL
NTS



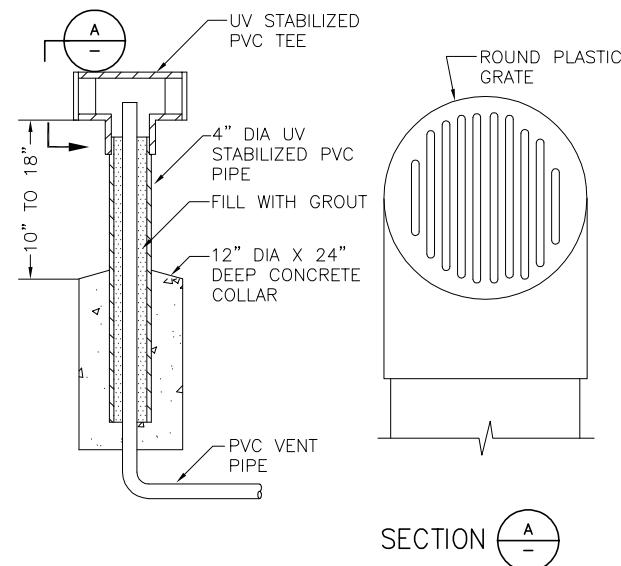
RECTIFIER INSTALLATION WITH ELECTRICAL ENCLOSURE
SECTION
NTS



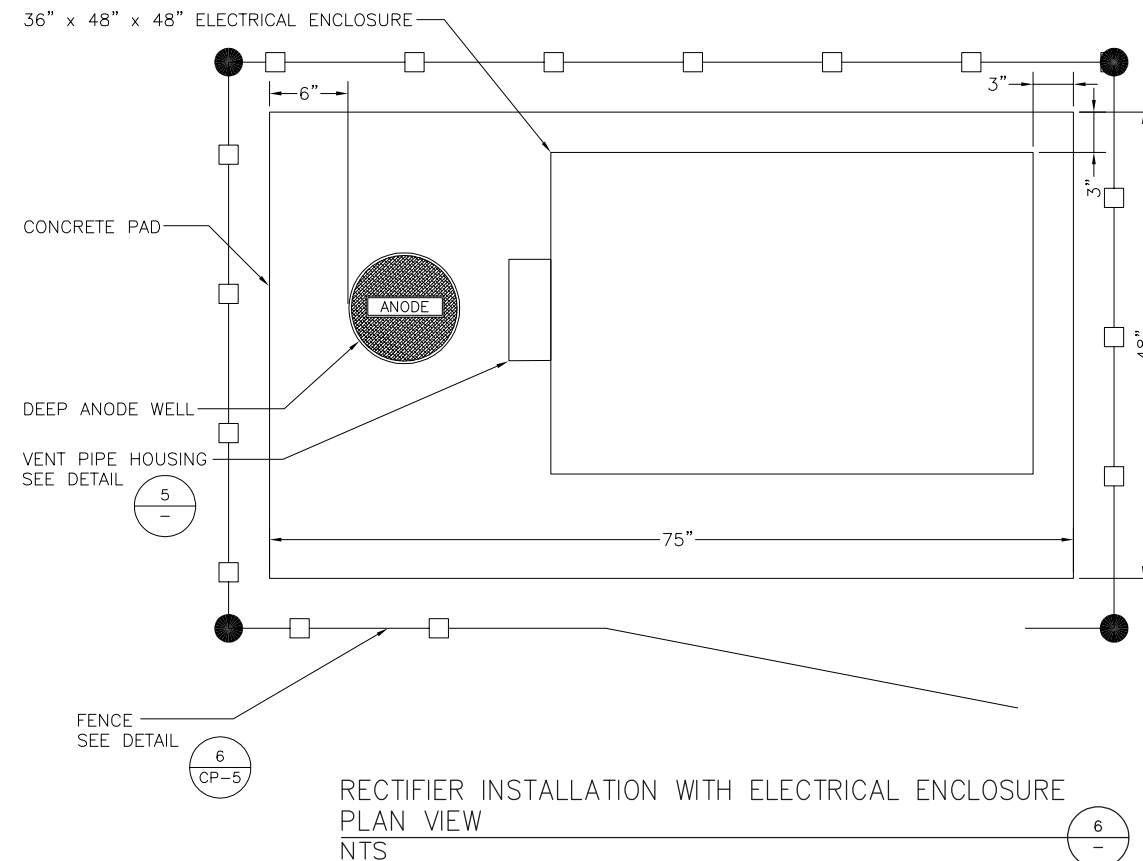
AC SERVICE METER DETAIL
NTS



IMPRESSED CURRENT ANODE
JUNCTION BOX DETAIL
NTS



VENT PIPE HOUSING DETAIL
NTS



RECTIFIER INSTALLATION WITH ELECTRICAL ENCLOSURE
PLAN VIEW
NTS

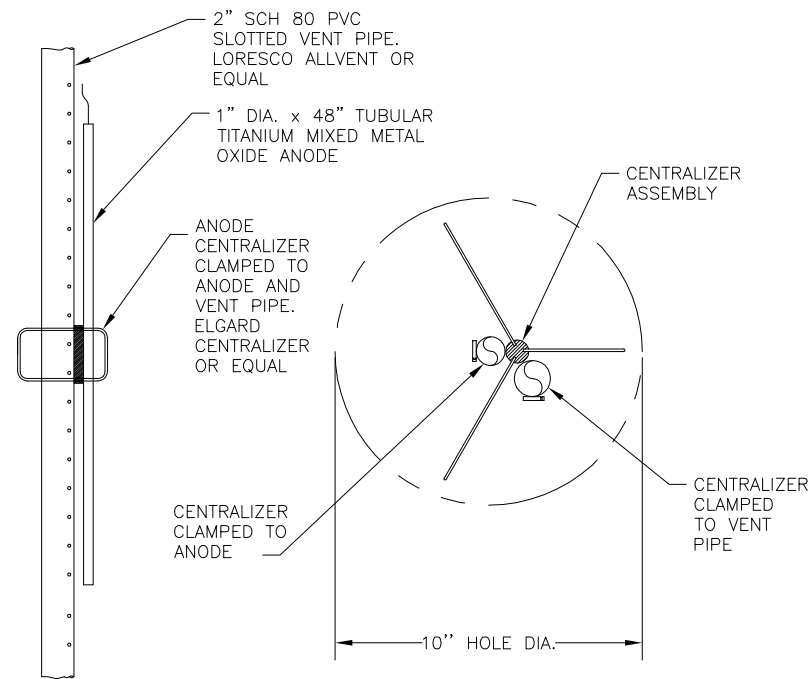
No.	Date	Revisions	App.

Date: JULY 2014
 Designed By: AC
 Drawn By: AC
 Checked By: GG
 SCALE: 1/8" = 1'-0"

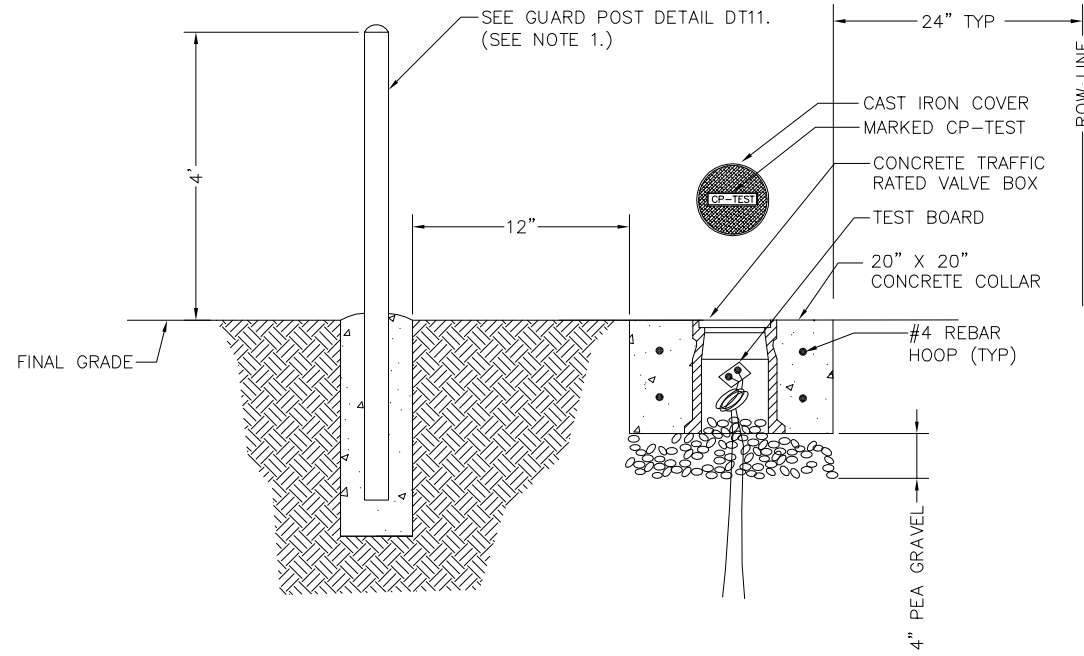
V&A
 8220 Jones Road, Suite 800
 Houston, TX 77065
 Tel: (713) 566-0067, Fax: (713) 566-0068
 Fm No. F-0154

**SAN ANTONIO
 WATER SYSTEM**

**SAWS JOB NO. 14-8605 (WATER)
 WRIP - PROJECT 1, SEGMENT 2A**
 CATHODIC PROTECTION
 DETAILS

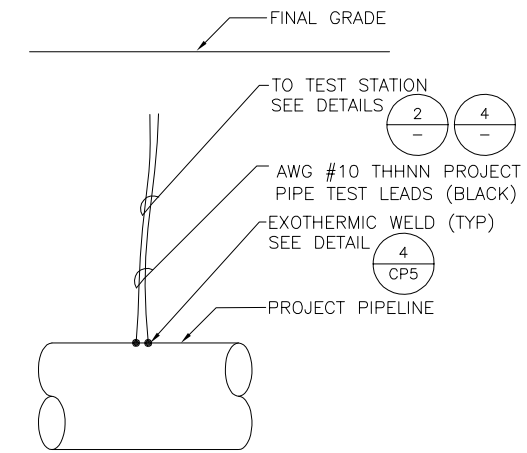


ANODE CENTRALIZER INSTALLATION DETAIL (1)
NTS

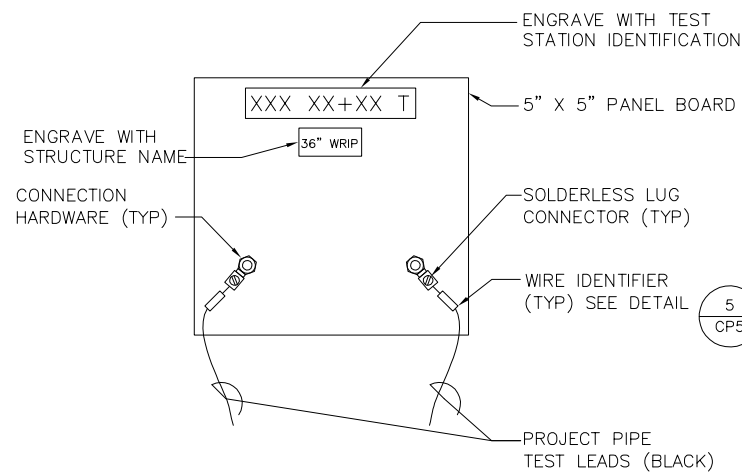


NOTE:
1. GUARD POST SHALL NOT BE INSTALLED IN DRAINAGE CHANNELS, OR WITHIN ROAD RIGHT-OF-WAY.

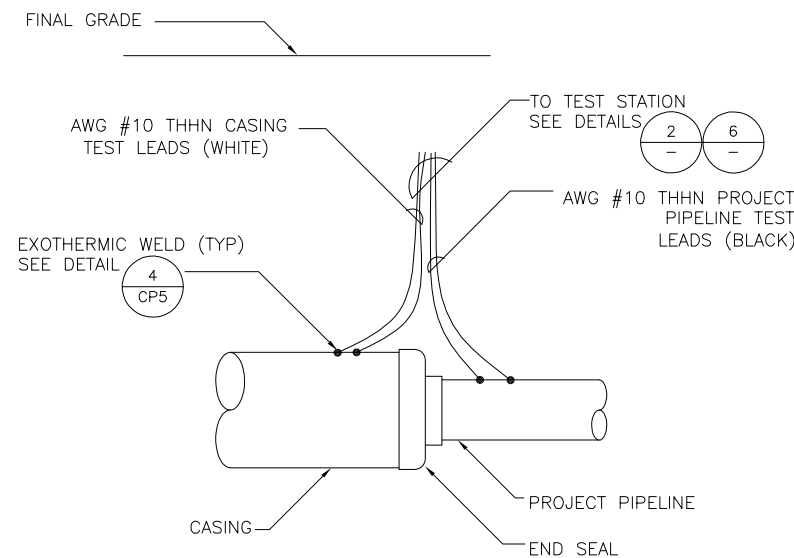
FLUSH MOUNTED TEST STATION DETAIL (2)
NTS



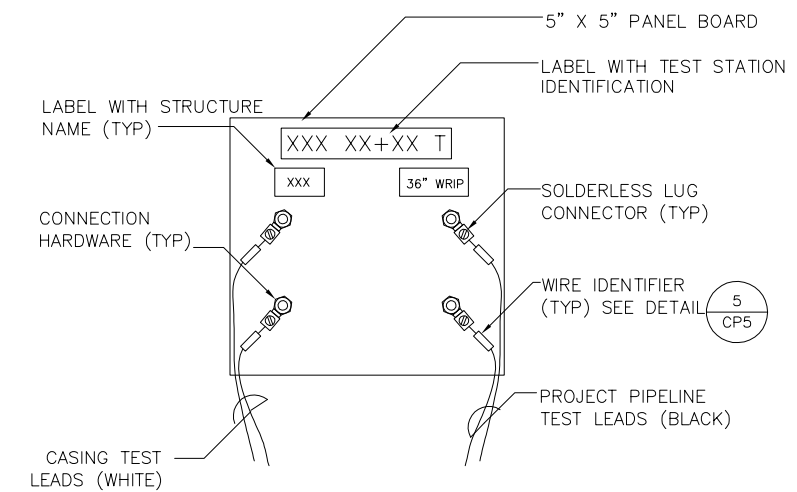
MONITORING TEST STATION DETAIL (MTS) (3)
NTS



MONITORING TEST STATION TEST BOARD DETAIL (4)
NTS



CASING TEST STATION DETAIL (CTS) (5)
NTS



CASING TEST STATION TEST BOARD DETAIL (6)
NTS

No.	Date	Revisions	App.

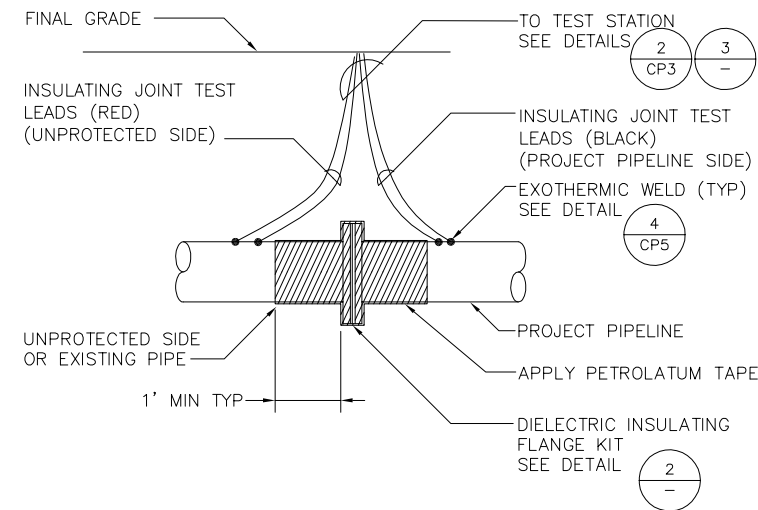
STATE OF TEXAS
GARY R. GRAHAM
111995
REGISTERED PROFESSIONAL ENGINEER
7/24/2014
V&A Consulting Engineers, Inc.
Texas Registered Engineering Firm
F-9154

Date:	JULY 2014
Designed By:	AC
Drawn By:	AC
Checked By:	GG
SCALE:	

V&A
8220 Jones Road, Suite 500
Houston, TX 77065
Tel. (713) 568-9067, Fax (713) 568-9068
Firm No. F-9154

SAN ANTONIO WATER SYSTEM

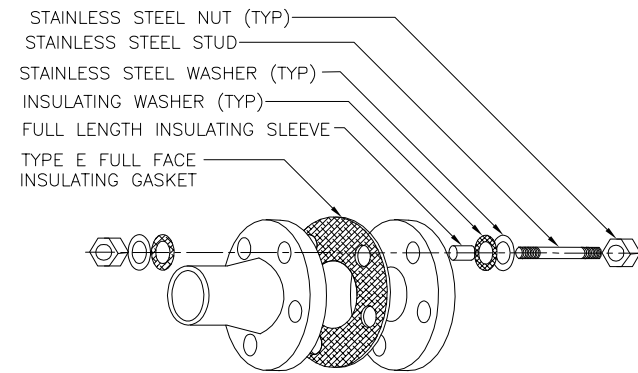
SAWS JOB NO. 14-8605 (WATER)
WRIP - PROJECT 1, SEGMENT 2A
CATHODIC PROTECTION DETAILS



NOTE:
DO NOT APPLY PETROLATUM TAPE IF FLANGE IS LOCATED ABOVE GRADE OR IN A VAULT.

INSULATING JOINT TEST STATION (FLANGE) DETAIL (IJTS)
NTS

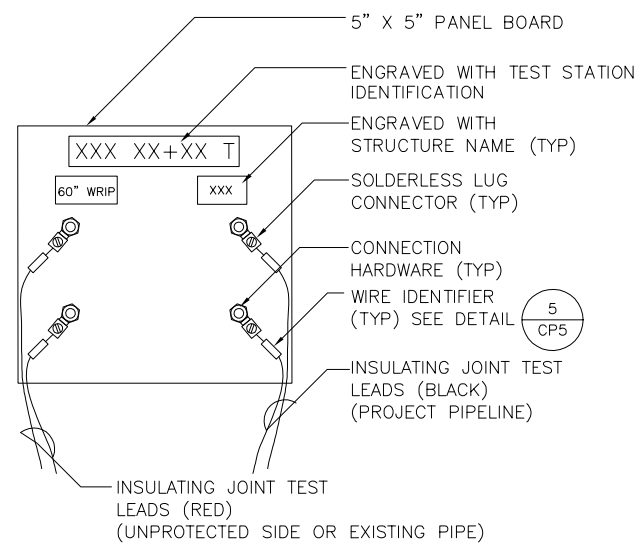
1
-



DIELECTRIC INSULATING FLANGE KIT DETAIL

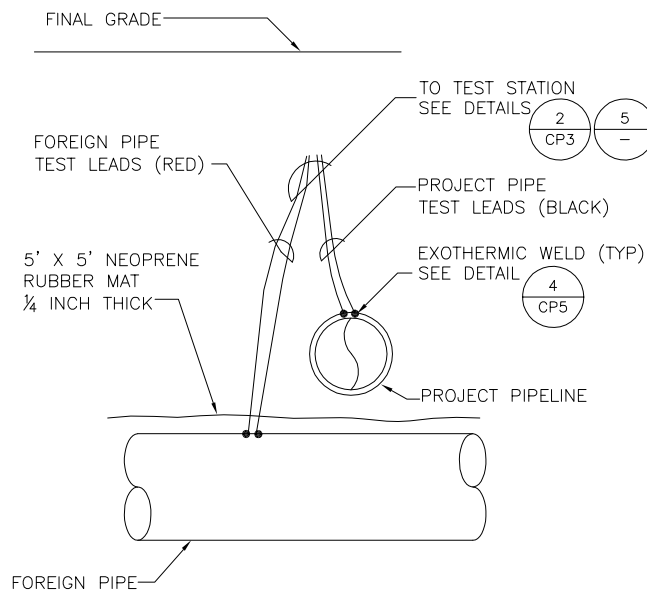
NTS

2
-



INSULATING JOINT (IJTS) TEST BOARD DETAIL
NTS

3
-

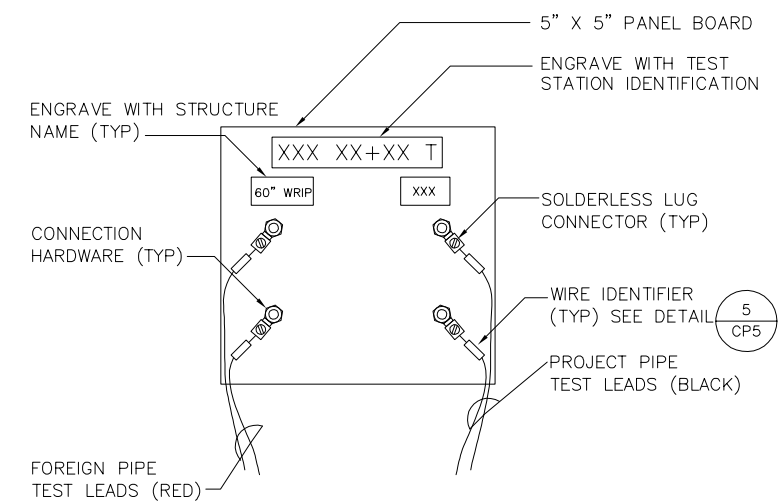


NOTES:

1. CONNECTIONS TO FOREIGN PIPELINES SHALL BE MADE BY THE FOREIGN PIPE OWNER'S REPRESENTATIVE

FOREIGN PIPE TEST STATION (FPTS) DETAIL
NTS

4
-



FOREIGN PIPE TEST STATION TEST BOARD DETAIL
NTS

5
-

No.	Date	Revisions	App.
1	7/24/2014		



V&A Consulting Engineers, Inc.
Texas Registered Engineering Firm
F-9154

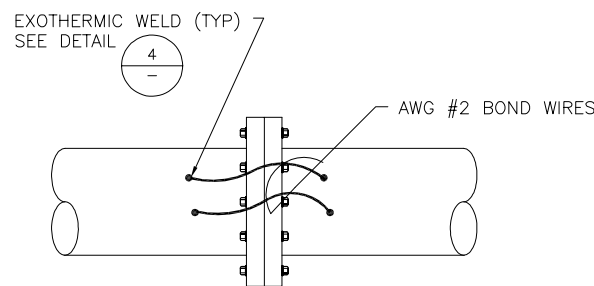
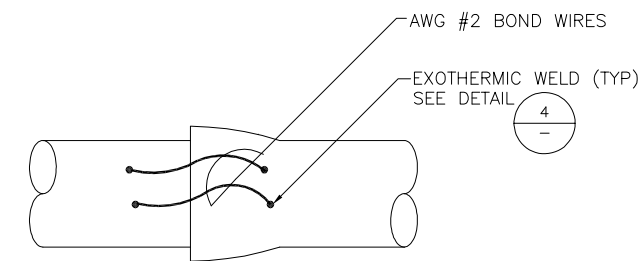
Date:	JULY 2014
Designed By:	AC
Drawn By:	AC
Checked By:	GG
SCALE:	



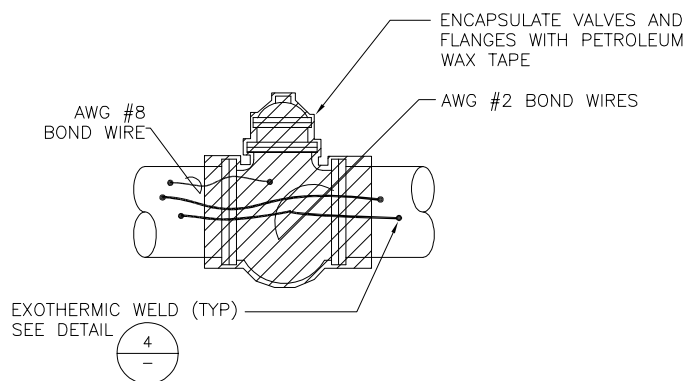
SAWS JOB NO. 14-8605 (WATER)
WRIP - PROJECT 1, SEGMENT 2A
CATHODIC PROTECTION
DETAILS

Sheet CP4

of

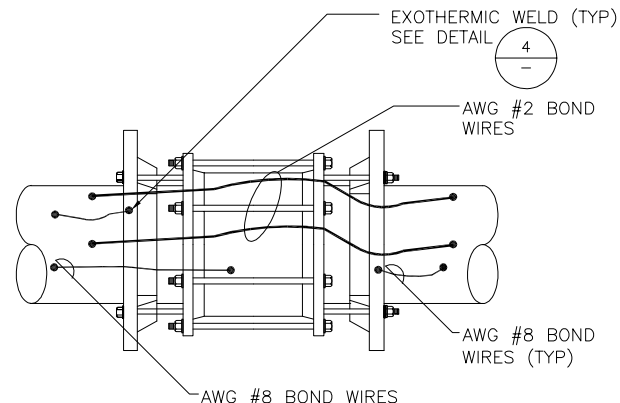


BELL AND SPIGOT JOINT BOND DETAIL
FLANGE JOINT BOND DETAIL
NTS

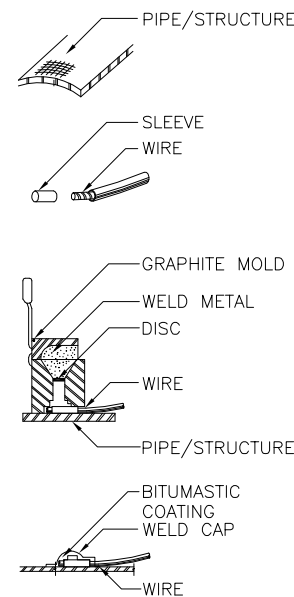


NOTE:
IF VALVE MATERIAL DIFFERS FROM PIPELINE MATERIAL CONTRACTOR SHALL PETROLATUM TAPE VALVE TO 1-FT MIN OUTSIDE OF FLANGE AS SPECIFIED IN CATHODIC PROTECTION SPECIFICATIONS

FLANGE JOINT AND VALVE BOND DETAIL
NTS

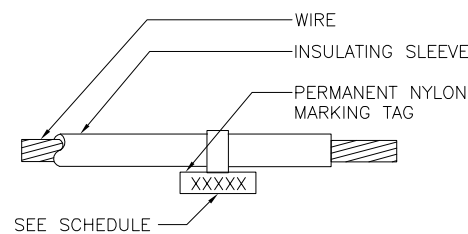


FLEX COUPLING JOINT BOND DETAIL
NTS



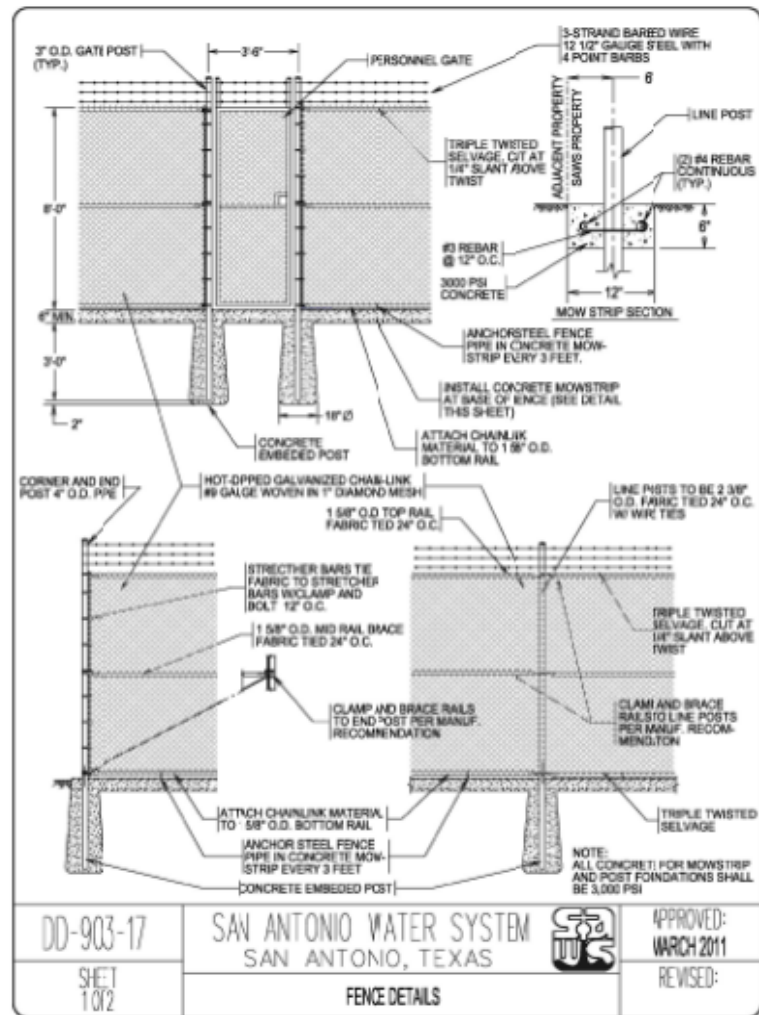
- FILE PIPE/STRUCTURE TO BARE METAL AND CLEAN SURFACE.
- STRIP INSULATION FROM WIRE AND ATTACH SLEEVE.
- HOLD MOLD FIRMLY WITH OPENING AWAY FROM OPERATOR. IGNITE WITH FLINT GUN REMOVE SLAG FROM CONNECTION WITH CHIPPING HAMMER.
- COVER CONNECTION WITH BITUMASTIC COATING OVER ALL EXPOSED METAL, PLACE WELD CAP OVER CONNECTION. REPAIR ALL DAMAGE TO COATING AND LINING IN ACCORDANCE WITH MFG RECOMMENDATIONS.

EXOTHERMIC WELD DETAIL
NTS



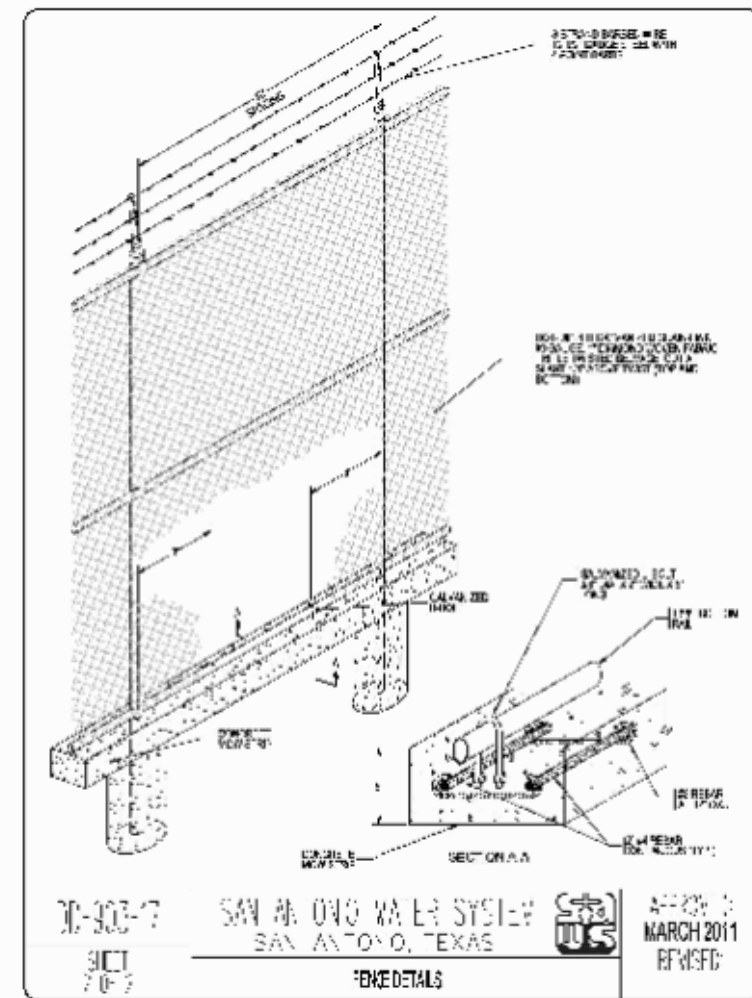
STRUCTURE	LABEL
60" STEEL WATER LINE	60"
X" STEEL GAS LINE	X" G
IJ UNPROTECTED SIDE WATER	XX" W
ANODE HEADER CABLE	#XX ANODE

WIRE IDENTIFIER DETAIL
NTS



DD-903-17
SHEET 1 OF 2
SAN ANTONIO WATER SYSTEM
SAN ANTONIO, TEXAS
FENCE DETAILS
APPROVED: MARCH 2011
REVISED:

FENCE DETAIL
NTS



DD-903-17
SHEET 2 OF 2
SAN ANTONIO WATER SYSTEM
SAN ANTONIO, TEXAS
FENCE SECTION
APPROVED: MARCH 2011
REVISED:

FENCE SECTION
NTS

App.	Revisions	Date	No.
		7/24/2014	

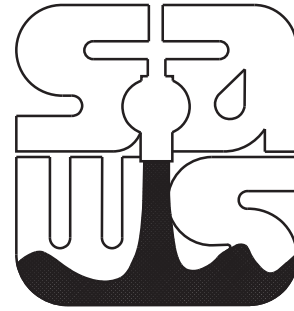
V&A Consulting Engineers, Inc.
Texas Registered Engineering Firm
F-9154

V&A
8220 Jones Road, Suite 500
Houston, TX 77065
Tel: (713) 566-9067, Fax: (713) 566-9068
Firm No. F-9154

SAN ANTONIO WATER SYSTEM

SAWS JOB NO. 14-8605 (WATER)
WRIP - PROJECT 1, SEGMENT 2A
CATHODIC PROTECTION
DETAILS

PLANS FOR TREE PROTECTION AND PRESERVATION



JOB NO. 09-8613-220

WATER RESOURCES INTEGRATION PIPELINE PROJECT 1, SEGMENT II

TABLE OF CONTENTS	
Sheet No.	Description
TR01	Cover Sheet
TR02	Tree Protection & Preservation Details
TR03 - TR15	Tree Protection Plan Sheets

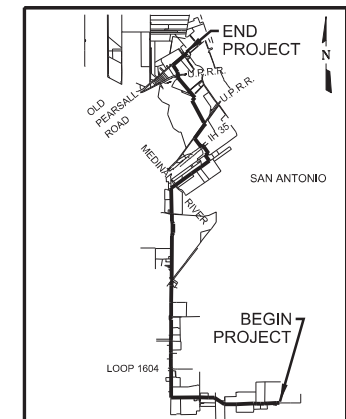
Heritage Tree Summary in Flood Plain					
Point No.	Tree Type	Trunk Dia. (in)	Canopy Dia. (ft)	Canopy Area (sf)	Preserved
1	Oak	45	70	3848	x
2	Mesquite	25	35	962	x
3	Mesquite	24	30	707	x
4	Mesquite	26	40	1257	x
6	Hackberry	24	45	1590	x
12	Mesquite	24	40	1257	x
13	Mesquite	28	45	1590	x
14	Mesquite	30	50	1963	x
15	Mesquite	38	50	1963	x
16	Mesquite	24	45	1590	x
18	Mesquite	26	35	962	x
19	Hackberry	31	50	1963	x
20	Oak	57	70	3848	x
21	Mesquite	30	55	2376	x
23	Oak	34	50	1963	x
24	Hackberry	28	50	1963	x
25	Oak	30	60	2827	x
26	Hackberry	28	50	1963	x
27	Oak	35	75	4418	x
28	Oak	27	35	962	x
62	Hackberry	27	35	962	
63	Mesquite	40	35	962	x
64	Mesquite	30	35	962	x
65	Oak	30	45	1590	x
80	Oak	32	80	5027	
81	Elm	28	50	1963	x
82	Hackberry	24	50	1963	x
83	Elm	26	60	2827	x
84	Oak	36	60	2827	x
85	Cypress	33	30	707	x
86	Cypress	24	25	491	x
87	Cypress	40	45	1590	x
88	Cypress	35	45	1590	x
89	Cypress	54	60	2827	x
90	Cypress	36	50	1963	x
91	Cypress	44	60	2827	x
92	Cypress	32	40	1257	x
93	Cypress	36	60	2827	x
94	Cypress	30	30	707	x
95	Cypress	38	40	1257	x
96	Cypress	24	30	707	x
97	Cypress	27	30	707	x
98	Pecan	27	65	3318	x
99	Pecan	24	50	1963	x
104	Elm	24	70	3848	x
109	Mesquite	28	40	1257	x
113	Elm	28	50	1963	x
127	Mesquite	25	45	1590	x
128	Elm	25	30	707	x
129	Mesquite	29	45	1590	x
130	Elm	24	45	1590	x
156	Hackberry	24	50	1963	x

Tree Preservation Table										
	Total Canopy Area (acre)	Heritage Tree Canopy Area (acre)	Total Canopy Area w/o Heritage Trees (acre)	% Required to be Preserved Excludng Heritage Trees	Area Required to be Preserved Excluding Heritage Trees (acre)	Area to be Preserved (Acre)	Area Required to be Mitigated (acre)	Native Seeding Credit	Area to be Mitigated	Diameter to be Mitigated
General Canopy	33.19		33.19	25%	8.30	2.47	5.83	50%	2.92	4322
Floodplain Canopy	10.86	2.08	8.78	80%	7.02	0.55	6.47	50%	3.24	2296

Heritage Tree Table			
Total Diameter (in)	Diameter Removed	Percent Retained	Diameter to be Mitigated (in)
1598	88	94%	206

SEGMENT 2A SHEETS TR03 THRU TR10
SEGMENT 2B SHEETS TR10 THRU TR15

THE SEAL APPEARING ON THIS DOCUMENT WAS AUTHORIZED BY ERNEST T. MAESTAS, P.E. 52938 ON 7/17/2014.

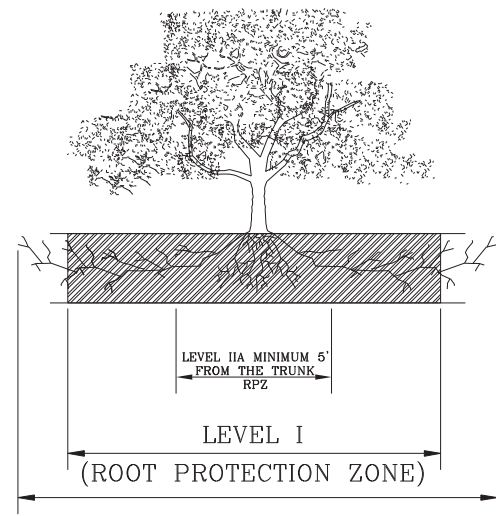


SITE DIAGRAM FOR JOB No. 09-8613-220

JOB TITLE: WATER RESOURCES INTEGRATION PIPELINE PROJECT 1, SEGMENT II

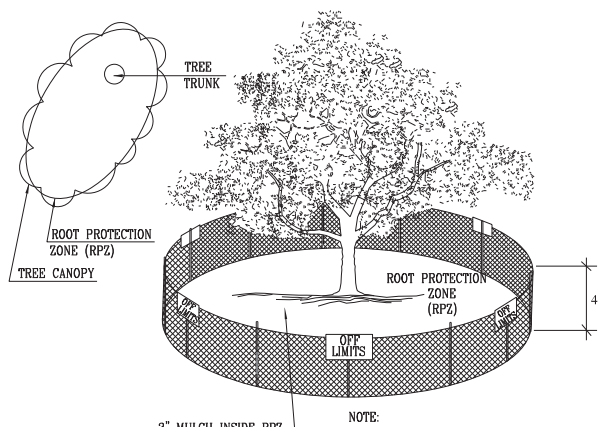


DON DURDEN, INC.
d.b.a. CIVIL ENGINEERING CONSULTANTS
11550 IH 10 WEST, SUITE 395
SAN ANTONIO, TEXAS 78230-1037
TEL: (210) 641-9999
FAX: (210) 641-8440
REGISTRATION #F-2214



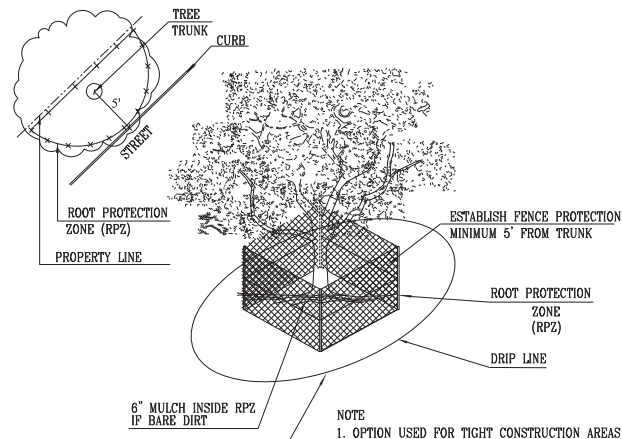
1.1.1 ELEVATION
N. T. S.

ROOT PROTECTION ZONE—THE ROOT PROTECTION ZONE IS A CIRCULAR AREA AROUND A TREE THAT IS BASED ON THE DIAMETER OF THE TREE. EACH 1 INCH DIAMETER OF THE TREE EQUALS 1 FOOT RADIUS FOR ROOT PROTECTION ZONE.



1.1.2 LEVEL I & FENCE PROTECTION
N. T. S.

NOTE:
1. THE FENCING SHOWN ABOVE IS DIAGRAMATIC ONLY AND WILL CONFORM TO THE DRIP LINE AND LIMITED TO PROJECT BOUNDARY.
2. FOR ACCEPTABLE FENCING MATERIALS SEE SPECIFICATIONS.

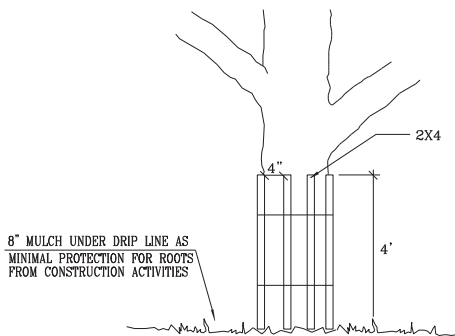


1.1.3 LEVEL II A FENCE PROTECTION
N. T. S.

NOTE:
1. OPTION USED FOR TIGHT CONSTRUCTION AREAS OR WHEN CONSTRUCTION OCCURS IN ROOT PROTECTION ZONE.
2. FOR ACCEPTABLE FENCING MATERIALS SEE SPECIFICATIONS.

TREE PROTECTION NOTES (ALSO SEE GENERAL NOTES)

- ALL TREE PRESERVATION AND TREATMENT MEASURES TO INCLUDE, BUT NOT LIMITED TO, PRUNING, PROTECTING, FENCING, AND REMOVING SHALL BE PAID UNDER PREPARING RIGHT OF WAY; NO SEPARATE PAY ITEM.
- NO SITE PREPARATION WORK SHALL BEGIN IN AREAS WHERE TREE PRESERVATION AND TREATMENT MEASURES OUTLINED BELOW HAVENOT BEEN COMPLETED AND APPROVED BY THE ENGINEER.
- CONTRACTOR WILL NOT BE ALLOWED TO CLEAR CUT EASEMENTS AND WILL BE REQUIRED TO PROTECT AND PRESERVE AS MANY TREES AND TREE GROUPS AS POSSIBLE. A SUBMITTAL IS REQUIRED TO INDICATE TREE PROTECTION PLAN, TREE MARKING, AND HOW PERSONNEL ARE TO BE INSTRUCTED TO SAVE SAID TREES THROUGHOUT THE PROJECT. THE CONTRACTOR WILL BE REQUIRED TO REPLACE TREES THAT ARE APPROVED FOR PROTECTION AND PRESERVATION AT NO COST TO THE OWNER.
- ALL TREES TO BE PRESERVED AS PART OF THE PROJECT SHALL BE PROTECTED AGAINST INJURY OR DAMAGE, WHETHER BY CUTTING, SOIL COMPACTION, BREAKING, OR SKINNING OF ROOTS, TRUNKS, OR BRANCHES DURING CONSTRUCTION OPERATION. CONTRACTOR SHALL, AT HIS EXPENSE, REPAIR AND REPLACE TREES DAMAGED BY CONSTRUCTION OPERATIONS OR LACK OF ADEQUATE PROTECTION DURING CONSTRUCTION. REPLACE TREES SCHEDULED TO REMAIN AND DAMAGES BEYOND REPAIR BY CONSTRUCTION OPERATIONS, AS DETERMINED BY THE OWNER, WITH TREES OF SIMILAR SIZE AND SPECIES.
- PROTECT DESIGNATED TREES WITH A TEMPORARY 4 FOOT HIGH (MINIMUM) ENCLOSURE FENCE PER THE PROTECTIVE FENCE AND SIGN PLACEMENT DETAIL. FENCE MAY BE CONSTRUCTED OF CHAIN LINK, ORANGE MESH, OR A DOUBLE-RAIL WOOD FENCE. FENCING SHALL BE PLACED BEFORE ANY EXCAVATING OR GRADING IS BEGUN AND SHALL BE MAINTAINED FOR THE DURATION OF THE CONSTRUCTION WORK. FENCING SHALL ENCOMPASS (AT A MINIMUM) THE ROOT PROTECTION ZONE (RPZ), WHICH IS DEFINED AS THE AREA AROUND THE TREE WITH A DIAMETER IN FEET EQUAL TO THE TREE DIAMETER IN INCHES, OR THE TREE DRIP LINE, WHICHEVER IS GREATER. TREE DIAMETER IS MEASURED 4.5 FEET ABOVE THE GROUND. RPZ OF CLOSE TREES AND CLUSTERS OF TREES MAY OVERLAP.
- ALL TREES TO BE PROTECTED MUST ALSO BE PROTECTED FROM POSSIBLE DAMAGE DUE TO CONSTRUCTION EQUIPMENT EXHAUST. TEMPORARY REDIRECTION OF EQUIPMENT EXHAUST IS REQUIRED IF NECESSARY.
- WITHIN THE TREE PROTECTION FENCING AND RPZ, THE CONTRACTOR MUST NOT ALTER THE PERMEABILITY OF THE AREA. HE SHALL NOT STORE ANY MATERIALS, CONDUCT ANY CONSTRUCTION OR MAINTENANCE OPERATIONS, AND SHALL NOT SPREAD, PLACE OR DISPOSE OF ANY SOIL, OR STORE OR DISPOSE OF ANY OTHER MATERIALS (LIQUID OR SOLID) IN THIS AREA.
- IF TREES ARE DAMAGED BY CONSTRUCTION OPERATIONS, CONTRACTOR SHALL REPAIR DAMAGED TREES PROMPTLY TO PREVENT FURTHER DETERIORATION. ALL BROKEN BRANCHES AND EXPOSED ROOTS OF PROTECTED TREES SHALL BE CUT CLEANLY. FOR OAKS SPECIES, WOUNDS MUST BE PAINTED WITH AN ACCEPTABLE WOUND DRESSING WITH 30 MINUTES IN ORDER TO PREVENT INFECTION BY OAK WILT SPORES.
- CONTRACTOR SHALL NOT TIE ROPES, GUY WIRES, CHAINS, CABLES OR CLAMP ONTO ANY PROTECTED
- CONTRACTOR SHALL PROTECT ALL EXISTING TREES FROM CHANGES TO SOIL CHEMISTRY AND pH FACTOR BY PREVENTING DISPOSAL IN THE PROJECT AREA OF ANY CHEMICAL AGENTS OR pH ALTERING MATERIALS, SUCH AS LIME BASED MATERIALS IN CEMENT, PLASTER, OR SIMILAR MATERIALS.
- WHEN APPROVED TO WORK WITHIN THE RPZ, CONTRACTOR MAY TRIM INTERFERING BRANCHES OF PRESERVED TREES IN A METHOD ACCEPTABLE TO THE CITY OF SAN ANTONIO.
- WHEN APPROVED TO WORK WITHIN THE RPZ, CONTRACTOR SHALL BE LIMITED TO A 3 INCH CUT OR FILL. IF MORE THAN 3 INCHES OF GRADING IS REQUIRED, WELLING AND RETAINING METHODS ARE ALLOWED OUTSIDE OF THE ROOT PROTECTION ZONE AND MUST BE APPROVED BY THE CITY OF SAN ANTONIO.
- NO TREES SHALL BE REMOVED WITHOUT THE PRIOR APPROVAL OF THE CITY OF SAN ANTONIO.
- ALL TREES, BRUSH AND DEBRIS APPROVED FOR REMOVAL SHALL BE DISPOSED OF BY THE CONTRACTOR AT AN APPROVED OFF SITE LOCATION. NO BURNING WILL BE PERMITTED.
- WHEN MAKING REQUESTS TO REMOVE TREES, THE CONTRACTOR SHALL SUBMIT A WRITTEN REQUEST. CONTRACTOR'S REQUEST SHALL INCLUDE THE FOLLOWING INFORMATION.
 - REASON FOR REMOVAL OF TREE(S).
 - SIZE(S) AND TYPE(S) OF TREE(S) TO BE REMOVED
 - LOCATION BY STATION AND OFFSET OF THE TREE(S) TO BE REMOVED.

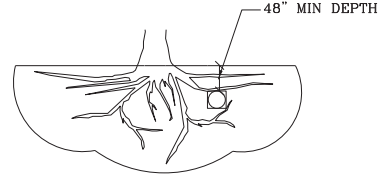


1.1.4 LEVEL II B FENCE PROTECTION
N. T. S.

NOTE
WRAP TREE TRUNK WITH 2"x4" STUDS AND ROPE OR BAND IN PLACE AS NEEDED TO PROTECT TREES IN WORK AREAS.

TREES THAT ARE MARKED TO BE PRESERVED ON A SITE PLAN AND FOR WHICH UTILITIES MUST PASS THROUGH THEIR ROOT PROTECTION ZONES MAY REQUIRE TUNNELING AS OPPOSED TO OPEN TRENCHES. THE DECISION TO TUNNEL WILL BE DETERMINED ON A CASE BY CASE BASIS BY THE ENGINEER.

TUNNELS SHALL BE DUG THROUGH THE ROOT PROTECTION ZONE IN ORDER TO MINIMIZE ROOT DAMAGE.

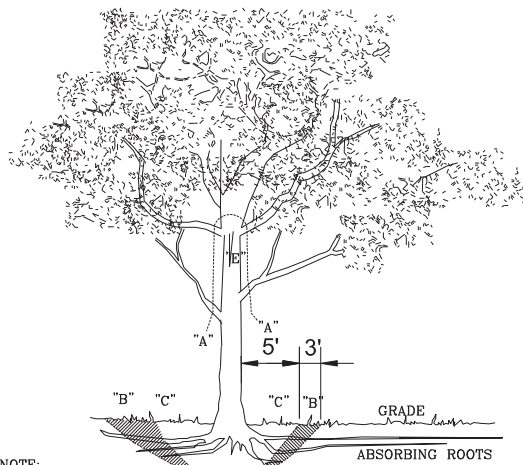


TUNNEL TO MINIMIZE ROOT DAMAGE (TOP) AS OPPOSED TO SURFACE-DUG TRENCHES IN ROOT PROTECTION ZONE WHEN THE 5' MINIMUM DISTANCE FROM TRUNK CAN NOT BE ACHIEVED.



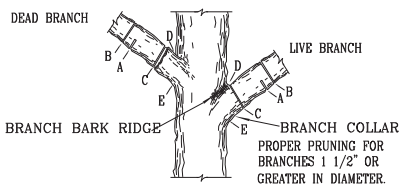
OPEN TRENCHING MAY BE USED IF EXPOSED TREE ROOTS DO NOT EXCEED 3" OR ROOTS CAN BE BENT BACK.

1.2 BORING THRU TREE ROOT ZONE
N. T. S.



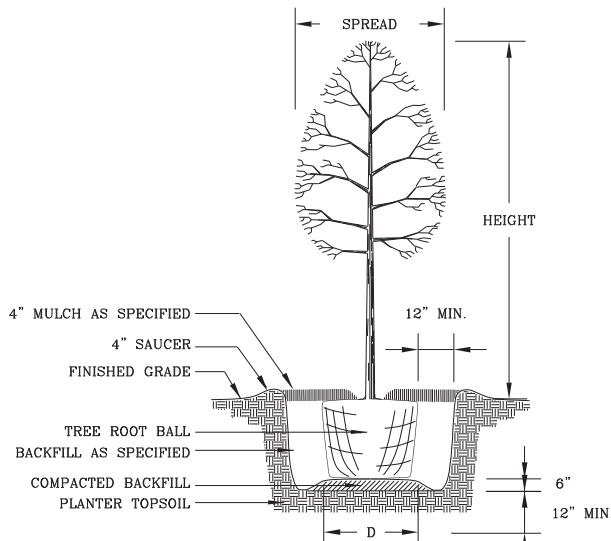
NOTE:
A" REMOVE BULKY TREE PARTS "SHRED" AND/OR HAUL SEPARATELY.
"B" BEGIN EXCAVATION APPROX. 8' FROM THE TRUNK - CUT THRU ANCHOR ROOTS AT AN ANGLE - 3' TO 4' DEEP
"C" USING TREE TRUNK AS A LEVER PUSH AT POINT "E" TO REMOVE TREE BOLE AND LARGE FEEDER ROOTS (4" TO 10" IN DIAM.)
"D" BACKFILL HOLE AND CLEAN UP.

1.3 TREE REMOVAL DIAGRAM
N. T. S.



NOTE: DO NOT CUT FROM D TO E.
A. FIRST CUT - TO PREVENT THE BARK FROM BEING PEELED WHEN THE BRANCH FALLS.
B. SECOND CUT - TO REDUCE THE WEIGHT OF BRANCH.
C. FINAL CUT - ALLOW FOR HEALING COLLAR BUT NO STUBS
D. BRANCH RIDGES - INDENT PROPERLY BRANCH RIDGES WHICH ARE SITE FOR DECAY.
FOR OAKS ONLY: PAINT ALL WOUNDS OR CUTS WITH PRUNING PAINT WITHIN 20 MIN TO PREVENT THE SPREAD OF OAK WILT.

1.4 BRANCH PRUNING DETAIL
N. T. S.



1.6 NEW TREE PLANTING DETAIL
N. T. S.

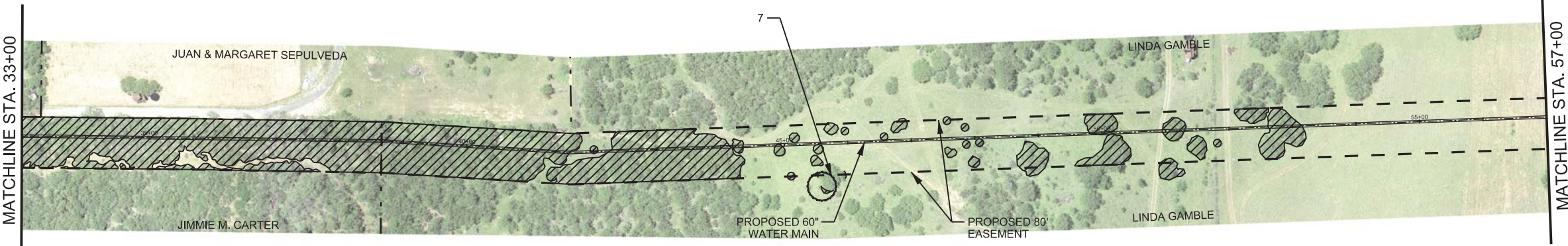
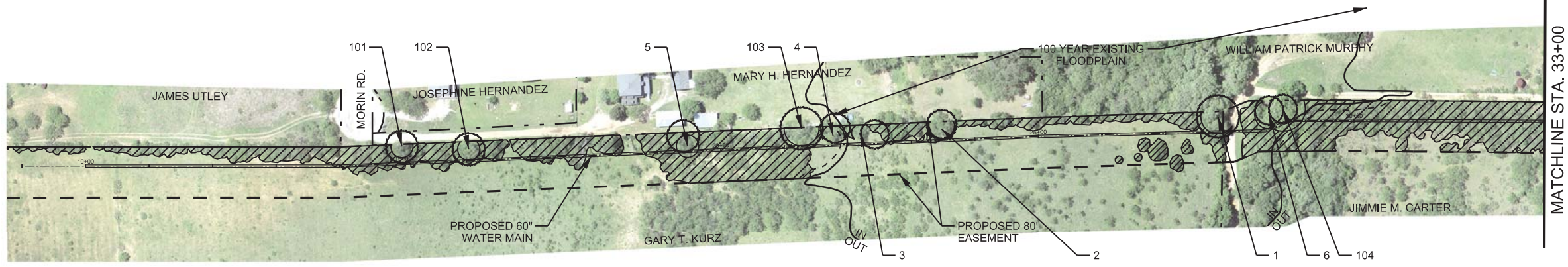
PREPARED BY: MARSTAS & ASSOCIATES, INC. SHEET TR02

CITY OF SAN ANTONIO

DEPARTMENT OF PUBLIC WORKS

CITY OF SAN ANTONIO
TREE PROTECTION DETAILS
TREE PRESERVATION

DESIGNED:	FED. RD. DIST. NO.	STATE		SHT. NO.
CHECKED:		TEXAS		1 OF 4
DRAWN:	STATE DIST. NO.	COUNTY	CONTROL NO.	SECT. NO.
CHECKED:		BEXAR		JOB NO. HIGHWAY NO.



Tree No.	Species	Trunk Diameter (in)	Span (ft)	Canopy Area (sq)	Preserved
1	Oak	45	70	3548	x
2	Mesquite	25	35	962	x
3	Mesquite	24	30	707	x
4	Mesquite	26	40	1257	x
5	Mesquite	27	35	962	x
6	Hackberry	24	45	1590	x
7	Mesquite	24	45	1590	x
101	Mesquite	27	35	962	x
102	Mesquite	27	35	962	x
103	Mesquite	35	55	2376	x
104	Elm	24	70	3948	x

MAI Job No. M002

THE SEAL APPEARING ON THIS DOCUMENT WAS AUTHORIZED BY ERNEST T. MAESTAS, P.E. 52938 ON 7/17/2014.

Ernest T. Maestas, P.E.

Date: 7/17/2014
 Designed by: MJM & KRJ
 Drawn by: MJM & KRJ
 Checked by: ETM & JPS
 Scale: FULL SIZE: 22" x 34"
 1" = 100'

MAESTAS & ASSOCIATES, P.C.
 11560 FM 19 WEST, STE. 320 SAN ANTONIO, TX 78230
 (210) 348-1888 (210) 348-1889 fax, TDDPE No.: F-333



NOTE: ALL HERITAGE TREES TO BE PRESERVED

SAN ANTONIO WATER SYSTEM

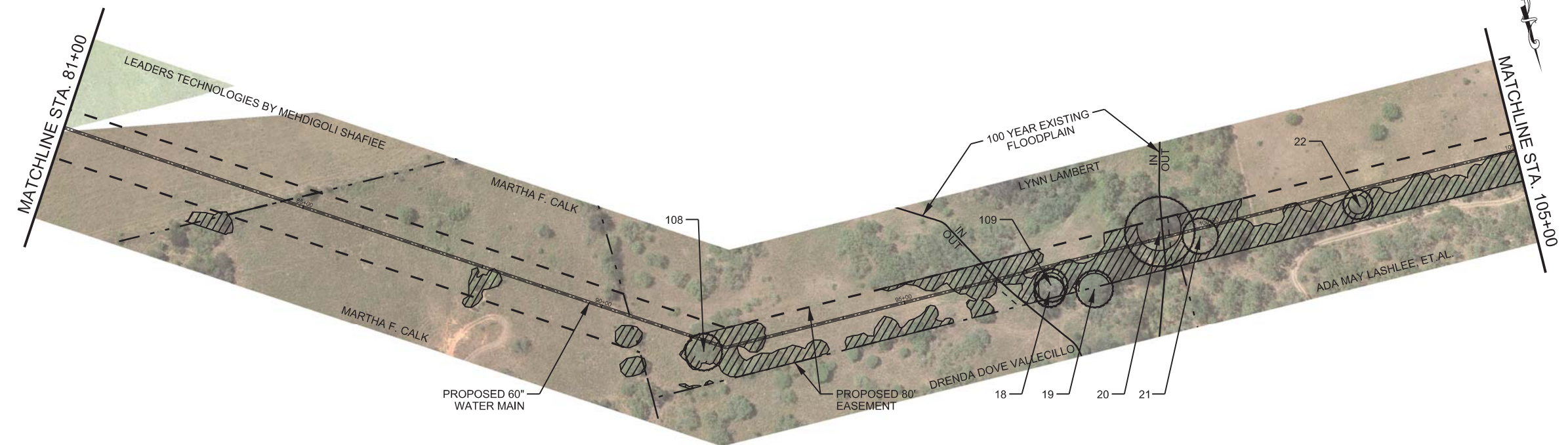
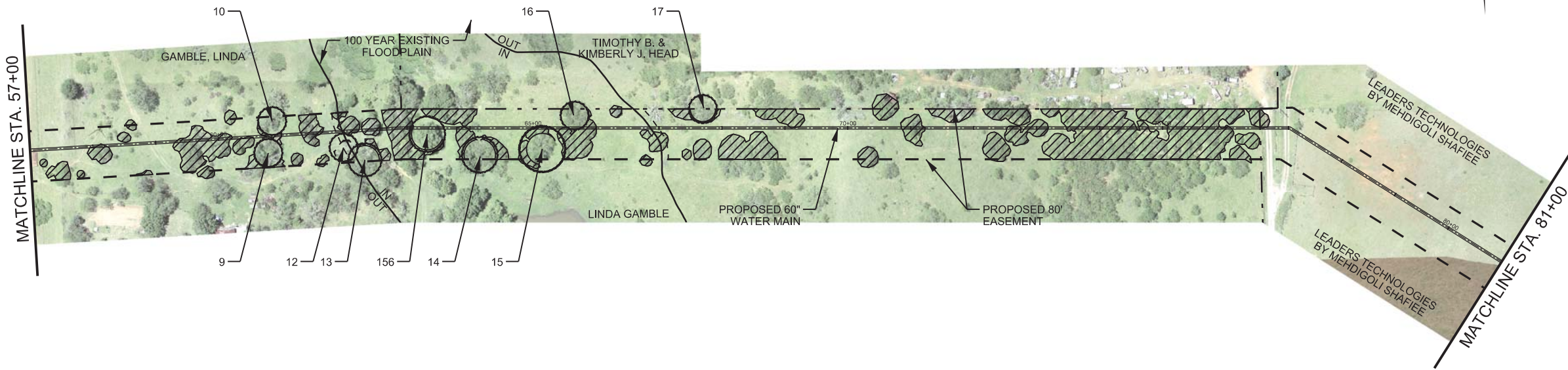
Legend

- - - Property Line
- - - Proposed Easement
- - - Existing Easement
- - - Flood Plain Boundaries
- - - Proposed Water
- - - Flood Plain Buffer Boundaries
- (5) Heritage Tree
- Tree Canopy Line

SAWS JOB NO. 09-8613-220 (WATER)
 WRIP - PROJECT 1, SEGMENT II
TREE PROTECTION PLAN
 SHEET 01 OF 13

Sheet **TR03** of

100% SUBMITTAL



Tree No.	Species	Trunk Diameter (in)	Canopy Span (ft)	Canopy Area (sq ft)	Preserved
9	Mesquite	24	45	69279187	x
10	Mesquite	24	45	69279187	x
12	Mesquite	24	40	707	x
13	Mesquite	26	45	1257	x
14	Mesquite	30	50	1590	x
15	Mesquite	38	50	1963	x
16	Mesquite	24	45	1963	x
17	Mesquite	24	40	1590	x
18	Mesquite	26	35	1257	x
19	Hackberry	31	50	962	x
20	Oak	57	70	1963	x
21	Mesquite	30	55	3948	x
22	Mesquite	25	30	2376	x
108	Mesquite	31	30	707	x
109	Mesquite	28	40	1257	x
156	Hackberry	24	50	1963	x

MAI Job No. M002

THE SEAL APPEARING ON THIS DOCUMENT WAS AUTHORIZED BY ERNEST T. MAESTAS, P.E. 52939 ON 7/17/2014.

Date: 7/17/2014
 Designed by: MJM & KRJ
 Drawn by: MJM & KRJ
 Checked by: ETM & JPS
 Scale: FULL SIZE: 22" x 34"
 1" = 100'

MAESTAS & ASSOCIATES, INC.
 11666 IH 10 WEST, STE. 320 SAN ANTONIO, TX 78230
 (210) 348-1888 (210) 348-1888 fax, TDD (210) 348-1888

0 100 200 300
 SCALE IN FEET

NOTE: ALL HERITAGE TREES TO BE PRESERVED

SAN ANTONIO WATER SYSTEM

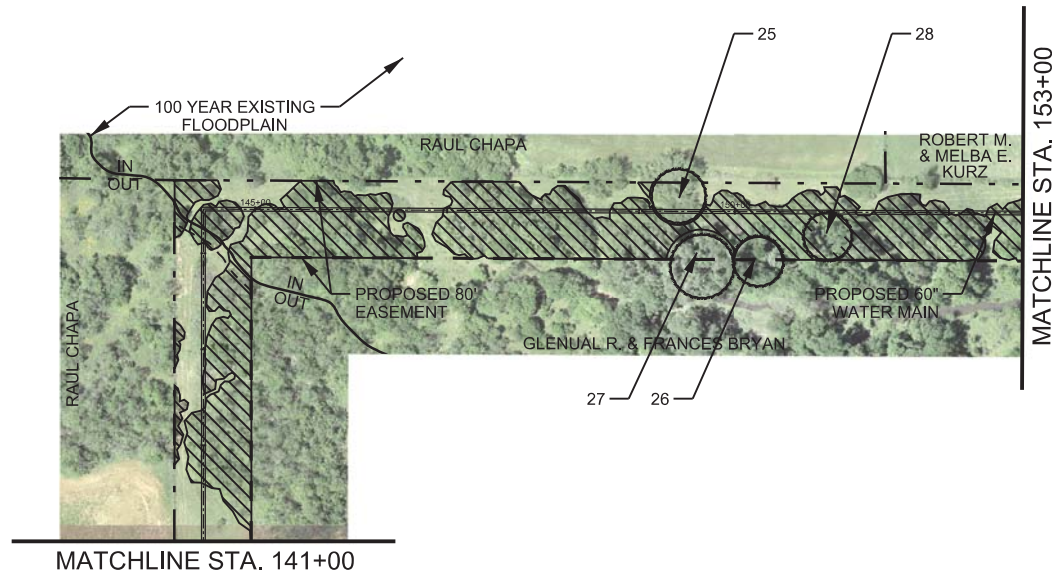
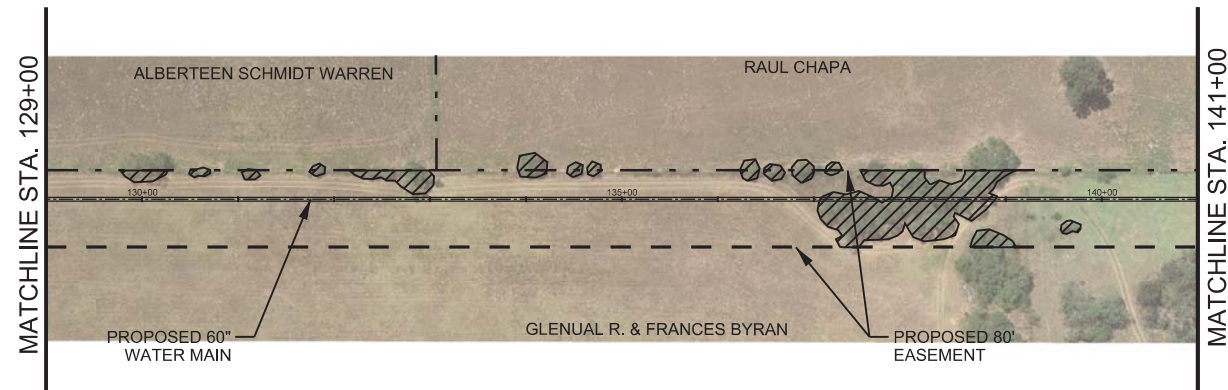
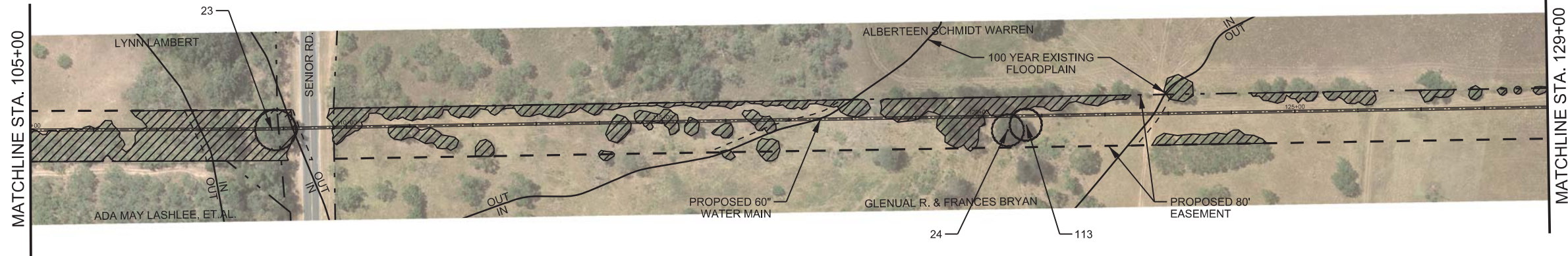
SAWS JOB NO. 09-8613-220 (WATER)
 WRIP - PROJECT 1, SEGMENT II
TREE PROTECTION PLAN
 SHEET 02 OF 13

Sheet **TR04** of

Legend

- - - Property Line
- - - Proposed Easement
- - - Existing Easement
- Flood Plain Boundaries
- Proposed Water
- - - Flood Plain Buffer Boundaries
- (5) Heritage Tree
- ▨ Tree Canopy Line

100% SUBMITTAL



Tree No.	Species	Trunk Diameter (in)	Canopy Span (ft)	Canopy Area (sf)	Preserved
23	Oak	34	50	1963	x
24	Hackberry	28	50	1963	x
25	Oak	30	60	2827	x
26	Hackberry	28	50	1963	x
27	Oak	35	75	4418	x
28	Oak	27	35	962	x
80	Oak	32	80	5027	x
113	Elm	28	50	1963	x

MAI Job No. M002

THE SEAL APPEARING ON THIS DOCUMENT WAS AUTHORIZED BY ERNEST T. MAESTAS, P.E. 52938 ON 7/17/2014.

Date: 7/17/2014
 Designed by: MJM & KRK
 Drawn by: MJM & KRK
 Checked by: ETM & JPS
 Scale: FULL SIZE: 22" x 34"
 1" = 100'

MAESTAS & ASSOCIATES, INC.
 11666 IH 10 WEST, STE. 320, SAN ANTONIO, TX 78230
 (210) 348-1888 (TX) 348-1888 (TX) TEPPE No.: F-333

SAN ANTONIO WATER SYSTEM

SAWS JOB NO. 09-8613-220 (WATER)
 WRIP - PROJECT 1, SEGMENT II
 TREE PROTECTION PLAN
 SHEET 03 OF 13

0 100 200 300
 SCALE IN FEET

NOTE: ALL HERITAGE TREES TO BE PRESERVED

Legend

- - - Property Line
- - - Proposed Easement
- - - Existing Easement
- Flood Plain Boundaries
- Proposed Water
- - - Flood Plain Buffer Boundaries
- (5) Heritage Tree
- ▨ Tree Canopy Line

100% SUBMITTAL

Sheet TR05 of

Tree No.	Species	Trunk Diameter (in)	Span (ft)	Canopy Area (sq ft)	Preserved
30	Mesquite	27	35	922	x
31	Oak	36	60	2827	x
32	Mesquite	24	50	1963	x
33	Oak	36	40	1257	x
34	Oak	40	40	1257	x
35	Oak	50	70	3848	x
36	Mesquite	38	30	707	x
157	Mesquite	24	30	707	x

MAI Job No. M002

THE SEAL APPEARING ON THIS DOCUMENT WAS AUTHORIZED BY ERNEST T. MAESTAS, P.E. 52938 ON 7/17/2014.

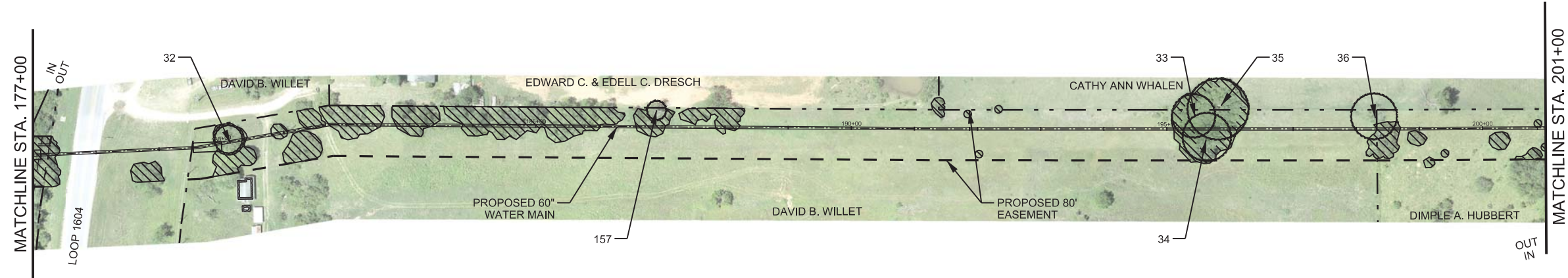
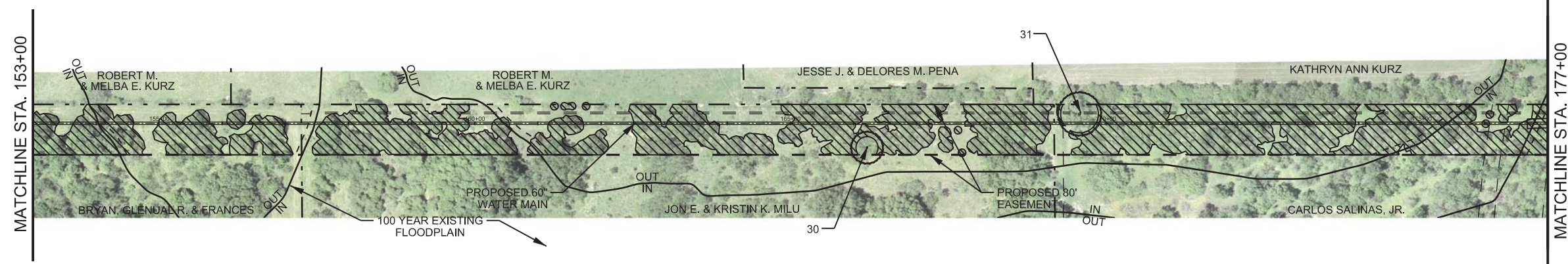
Date: 7/17/2014
 Designed by: MJM & KRJ
 Drawn by: MJM & KRJ
 Checked by: ETM & JPS
 Scale: FULL SIZE: 22" x 34"
 1" = 100'

MAESTAS
 & ASSOCIATES, INC.
 11560 FM 19 WEST, STE. 200 SAN ANTONIO, TX 78258
 (210) 348-1888 (TX) 348-1888 FAX (TX) 348-1888

SAN ANTONIO
WATER SYSTEM

SAWS JOB NO. 09-8613-220 (WATER)
 WRIP - PROJECT 1, SEGMENT II
TREE PROTECTION PLAN
SHEET 04 OF 13

Sheet **TR06**
 of



0 100 200 300
 SCALE IN FEET

NOTE: ALL HERITAGE TREES TO BE PRESERVED

- Legend**
- - - Property Line
 - - - Proposed Easement
 - - - Existing Easement
 - Flood Plain Boundaries
 - Proposed Water
 - - - Flood Plain Buffer Boundaries
 - (5) Heritage Tree
 - ▨ Tree Canopy Line

100% SUBMITTAL

Tree No.	Species	Trunk Diameter (in)	Canopy Span (ft)	Canopy Area (sq ft)	Preserved
37	Mesquite	24	35	962	x
38	Mesquite	35	40	1257	x
39	Mesquite	38	40	1257	x
40	Mesquite	71	70	3848	x
41	Mesquite	28	30	707	x
42	Mesquite	24	30	707	x
43	Mesquite	24	30	707	x
44	Mesquite	24	40	1257	x
45	Mesquite	26	40	1257	x
46	Elm	26	40	1257	x
47	Mesquite	34	40	1257	x
48	Oak	34	50	1963	x
49	Oak	38	50	1963	x
50	Oak	33	40	1257	x
55	Mesquite	26	40	1257	x
159	Mesquite	24	30	707	x

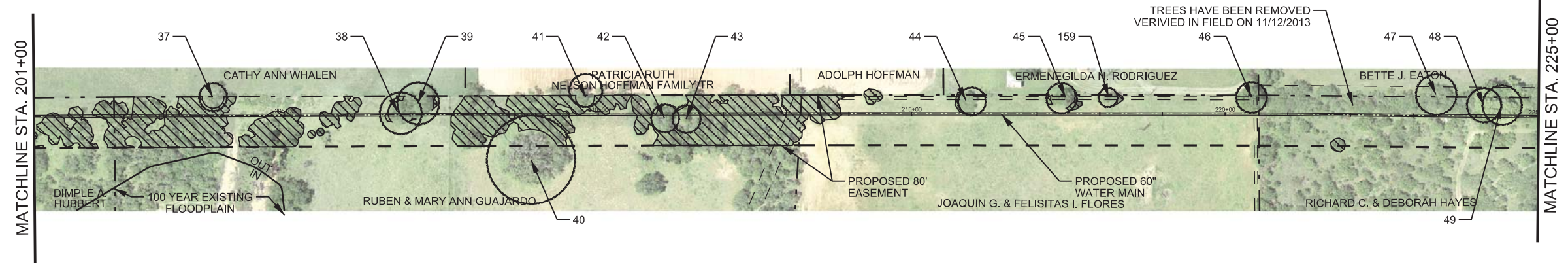
MAI Job No. M002

THE SEAL APPEARING ON THIS DOCUMENT WAS AUTHORIZED BY ERNEST T. MAESTAS, P.E. 52938 ON 7/17/2014.

Date: 7/17/2014
 Designed by: MJM
 Drawn by: MJM & KRJ
 Checked by: ETM & JPS
 Scale: FULL SIZE: 22"x34"
 1" = 100'

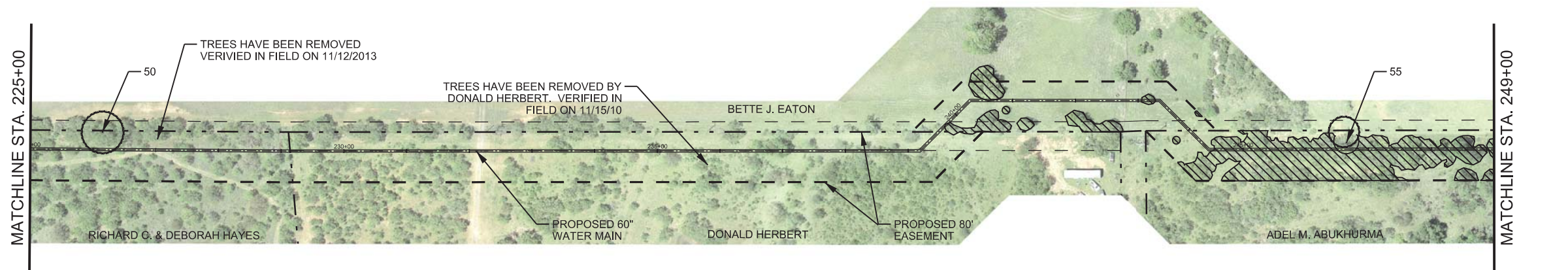
SAWS JOB NO. 09-8613-220 (WATER)
 WRIP - PROJECT 1, SEGMENT II
 TREE PROTECTION PLAN
 SHEET 05 OF 13

Sheet **TR07**
 of



0 100 200 300
 SCALE IN FEET

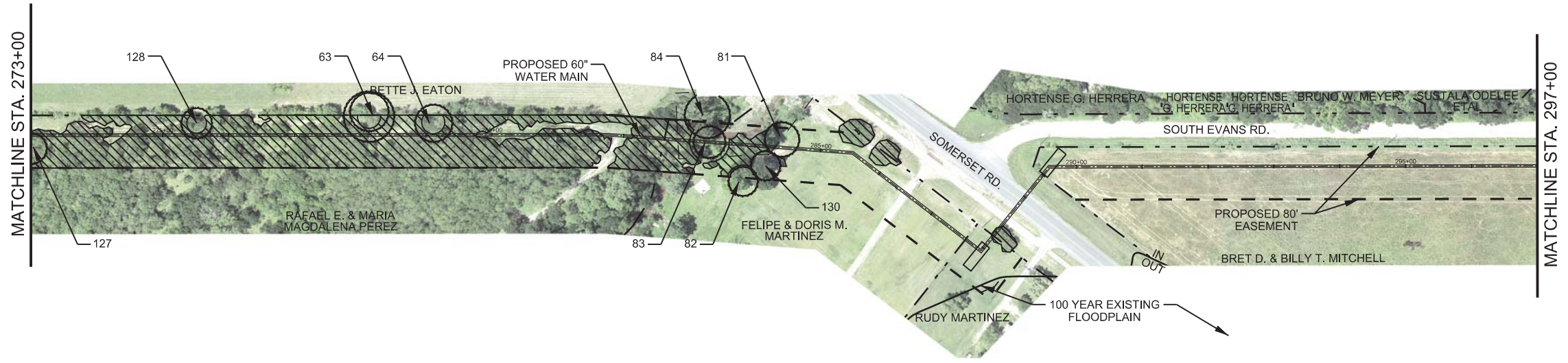
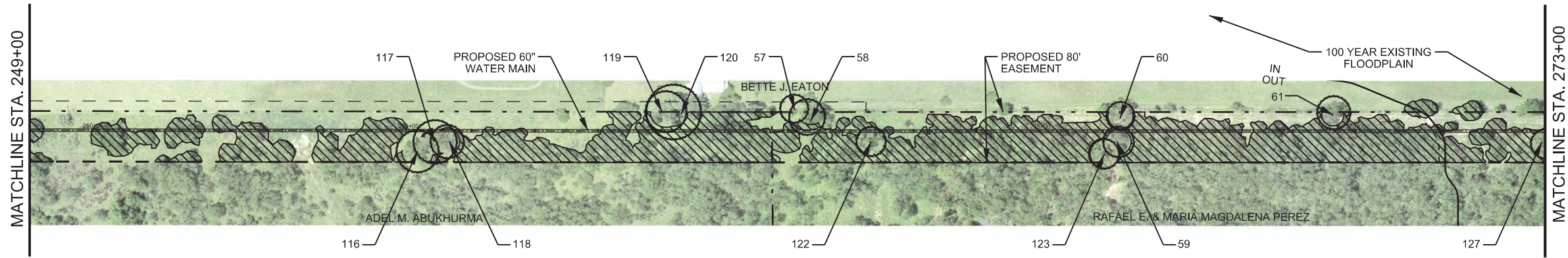
NOTE: ALL HERITAGE TREES TO BE PRESERVED



Legend

- - - Property Line
- - - Proposed Easement
- - - Existing Easement
- Flood Plain Boundaries
- Proposed Water
- - - Flood Plain Buffer Boundaries
- (5) Heritage Tree
- ▨ Tree Canopy Line

100% SUBMITTAL



Tree No.	Species	Trunk Diameter (in)	Canopy Span (ft)	Canopy Area (sq ft)	Preserved
57	Mesquite	24	50	1563	x
58	Mesquite	30	40	1257	x
59	Mesquite	26	40	1257	x
60	Mesquite	24	40	1257	x
61	Mesquite	30	35	962	x
62	Hackberry	27	35	962	x
63	Mesquite	40	35	962	x
64	Mesquite	30	35	962	x
81	Elm	28	50	1563	x
82	Hackberry	24	50	1563	x
83	Elm	26	60	2827	x
84	Oak	36	60	2827	x
116	Mesquite	35	50	1563	x
117	Mesquite	36	40	1257	x
118	Mesquite	28	40	1257	x
119	Pine	34	50	1563	x
120	Pine	45	45	1590	x
122	Mesquite	25	40	1257	x
123	Mesquite	25	50	1563	x
127	Mesquite	25	45	1590	x
128	Elm	25	30	707	x
129	Mesquite	29	45	1590	x
130	Elm	24	45	1590	x

MAI Job No. M002

THE SEAL APPEARING ON THIS DOCUMENT WAS AUTHORIZED BY ERNEST T. MAESTAS, P.E. 52938 ON 7/17/2014.

Date: 7/17/2014
 Designed by: MJM
 Drawn by: MJM & KRJ
 Checked by: ETM & JPS
 Scale: FULL SIZE: 22"x34"
 1" = 100'

MAESTAS & ASSOCIATES, INC.
 LANDSCAPE ARCHITECTURE & CIVIL ENGINEERING
 11660 FM 19 WEST, STE. 200, SAN ANTONIO, TX 78258
 (210) 348-1888 (TX) 348-1888 (TX) TEPE No.: F-333

0 100 200 300
 SCALE IN FEET

NOTE: ALL HERITAGE TREES TO BE PRESERVED

SAN ANTONIO WATER SYSTEM

Legend

- - - Property Line
- - - Proposed Easement
- - - Existing Easement
- Flood Plain Boundaries
- Proposed Water
- - - Flood Plain Buffer Boundaries
- (5) Heritage Tree
- ▨ Tree Canopy Line

SAWS JOB NO. 09-8613-220 (WATER)
 WRIP - PROJECT 1, SEGMENT II
TREE PROTECTION PLAN
 SHEET 06 OF 13

Sheet **TR08**
 of

100% SUBMITTAL

Tree No.	Species	Trunk Diameter (in)	Canopy Span (ft)	Canopy Area (sq ft)	Preserved
65	Oak	30	45	1590	x

MAI Job No. M002

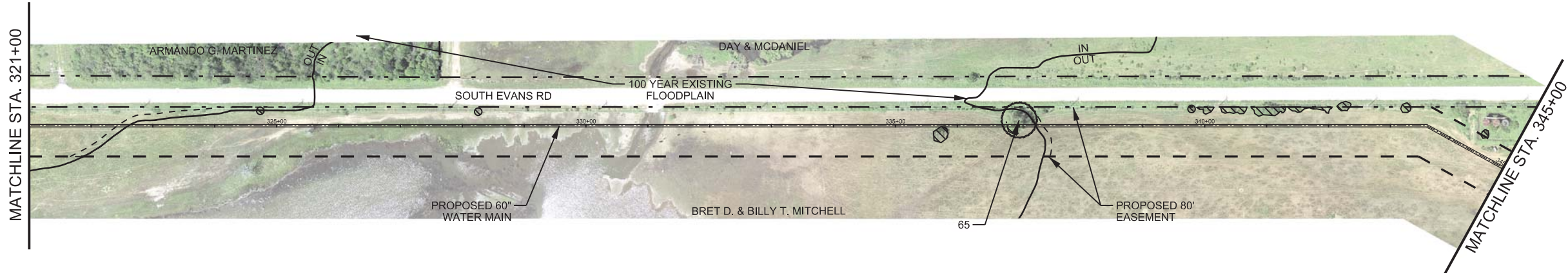
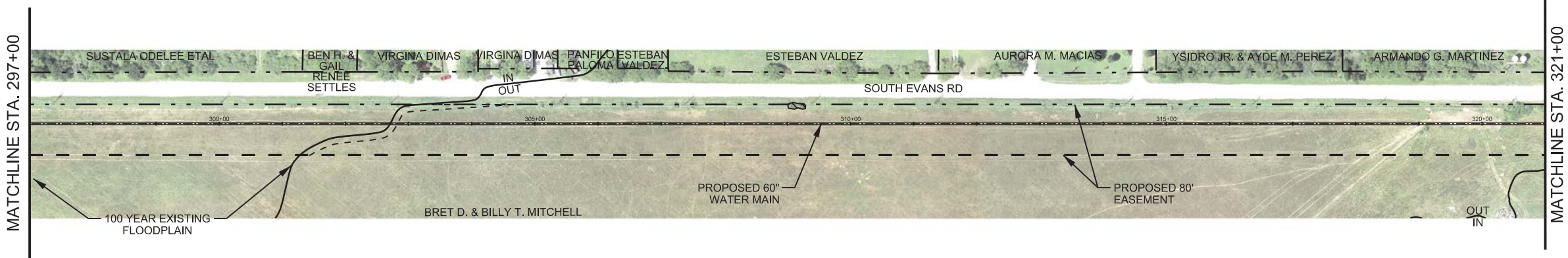
THE SEAL APPEARING ON THIS DOCUMENT WAS AUTHORIZED BY ERNEST T. MAESTAS, P.E. 52938 ON 7/17/2014.

Date: 7/17/2014
 Designed by: MJM & KRK
 Drawn by: MJM & KRK
 Checked by: ETM & JPS
 Scale: FULL SIZE: 22"x34"
 1" = 100'



SAWS JOB NO. 09-8613-220 (WATER)
 WRIP - PROJECT 1, SEGMENT II
 TREE PROTECTION PLAN
 SHEET 07 OF 13

Sheet **TR09**
 of

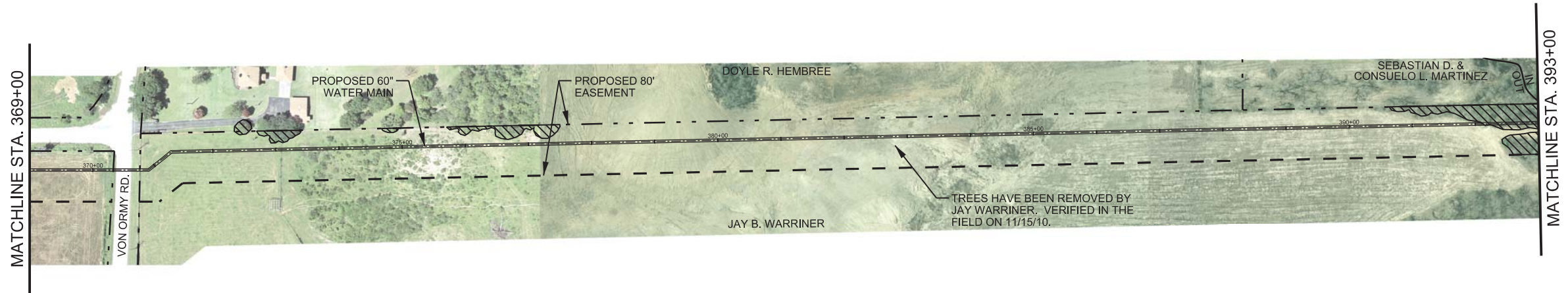
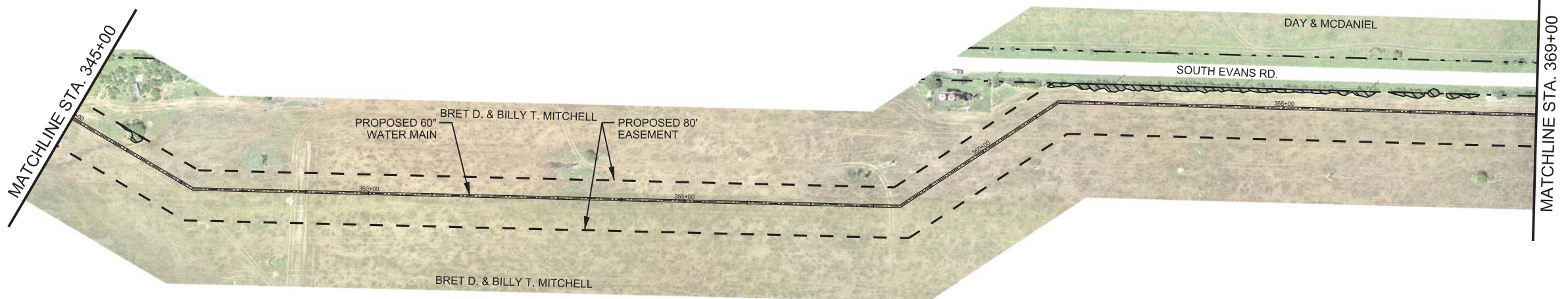


0 100 200 300
 SCALE IN FEET

NOTE: ALL HERITAGE TREES TO BE PRESERVED

- Legend**
- - - Property Line
 - - - Proposed Easement
 - - - Existing Easement
 - Flood Plain Boundaries
 - Proposed Water
 - - - Flood Plain Buffer Boundaries
 - (5) Heritage Tree
 - ▨ Tree Canopy Line

100% SUBMITTAL



NOTE: ALL HERITAGE TREES TO BE PRESERVED

Legend	
	Property Line
	Proposed Easement
	Existing Easement
	Flood Plain Boundaries
	Proposed Water
	Flood Plain Buffer Boundaries
	Heritage Tree
	Tree Canopy Line

100% SUBMITTAL

No.	Date	Revisions	App.

MAI Job No. M002

THE SEAL APPEARING ON THIS DOCUMENT WAS AUTHORIZED BY ERNEST T. MAESTAS, P.E. 52938 ON 7/17/2014.

Date: 7/17/2014
 Designed by: MJM
 Drawn by: MJM & KRK
 Checked by: ETM & JPS
 Scale: FULL SIZE: 22"x34"
 1" = 100'

MAESTAS
 & ASSOCIATES, INC.
 11566 FM 19 WEST, STE. 320, SAN ANTONIO, TX 78230
 (210) 348-1888 (TX) 348-1888 (TX) TEPE No.: F-333

SAN ANTONIO
WATER SYSTEM

SAWS JOB NO. 09-8613-220 (WATER)
 WRIP - PROJECT 1, SEGMENT II
TREE PROTECTION PLAN
SHEET 08 OF 13

Sheet **TR10**
 of